



SHIRTS & BLOUSES

ISABELLA BLOUSE

STYLE: ISA1



FABRIC: Koshiho (100% Polyester)

SIZES: 28 - 30 - 32 - 34 - 36 - 38 - 40 - 42 - 44 - 46

FEATURES:

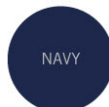
- Flattering fit for most body shapes
- Elongated placket
- Mandarin collar
- Pleated front
- Back neck pleats



WASH & WEAR



BLACK



NAVY



MID GREY



GC GLOBAL
CITIZEN[®]



ICON WOVEN SHIRT

MEN'S SHORT SLEEVE: **MWS8**
MEN'S LONG SLEEVE: **MWS9**
LADIES' 3/4 SLEEVE: **LWS8**



FABRIC: Polycotton

ADULT SIZES: S - M - L - XL - 2XL - 3XL - 4XL - 5XL

FEATURES:

- Reinforced top stitching
- Engraved matching buttons
- Men's style has a left breast pocket
- Ladies' style has a tapered waistline and three quarter sleeves with cuffs



CLASSIC WOVEN SHIRT

MEN'S SHORT SLEEVE: **MWS1**
MEN'S LONG SLEEVE: **MWS2**
LADIES' SHORT SLEEVE: **LWS1**
LADIES' LONG SLEEVE: **LWS2**



FABRIC: Polycotton with softwash treatment

ADULT SIZES: S - M - L - XL - 2XL - 3XL - 4XL - 5XL

FEATURES:

- Reinforced top stitching
- Pearlised engraved matching buttons
- Easy-wear fabric is treated to create a soft feel
- Men's style has a left breast pocket
- Ladies' style has a tapered waistline and a classic fit



WASH & WEAR



MWS2



MWS1



LWS2



LWS1





PRIME WOVEN SHIRT

MEN'S SHORT SLEEVE: **WSC202**

MEN'S LONG SLEEVE: **WSC203**



FABRIC: Cotton rich

ADULT SIZES: XS - S - M - L - XL - 2XL - 3XL - 4XL - 5XL

FEATURES:

- Reinforced top stitching
- Superior quality fabric for comfort and coolness
- Men's style has a button down designer collar and a single pocket
- Ladies' style has double pockets, three quarter sleeves and a relaxed fit



*Due to the nature of this fabric, blues may vary in shade.

HARPER BLOUSE

LADIES' STYLE: HAR1



FABRIC: Koshiho (100% Polyester)

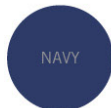
SIZES: 28 - 30 - 32 - 34 - 36 - 38 - 40 - 42 - 44 - 46

FEATURES:

- Flowy design complements most body shapes
- Trendy wide cuffs
- Pleated back



BLACK



NAVY



MID GREY





CAMERON SHIRT

MEN'S SHORT SLEEVE: **CAS20PC**
MEN'S LONG SLEEVE: **CAS40PC**



FABRIC: Superior quality polycotton

ADULT SIZES: S - M - L - XL - 2XL - 3XL - 4XL - 5XL

FEATURES:

- Superior quality polycotton
- Left breast pocket
- Button down collar
- Classy engraved VANGARD buttons



ROSELINA BLOUSE

LADIES' SHORT SLEEVE: **ROB20PC**
LADIES' LONG SLEEVE: **ROB40PC**



FABRIC: Superior quality polycotton

ADULT SIZES:
28 - 30 - 32 - 34 - 36 - 38 - 40 - 42 - 44 - 46 - 48 - 50 - 52 - 54

FEATURES:

- Superior quality polycotton
- Front and back darts
- Classy engraved DUCHESS buttons



CAMERON SHIRT - STRIPE DESIGN 5

MEN'S SHORT SLEEVE: **CAS2S5**
MEN'S LONG SLEEVE: **CAS4S5**



FABRIC: Cotton rich yarn dye

ADULT SIZES: S - M - L - XL - 2XL - 3XL - 4XL - 5XL

FEATURES:

- Left breast pocket
- Button down collar
- Classy engraved VANGARD buttons
- Comfortable cotton rich yarn dye fabric that is superior quality
- Crisp, classic stripe design



SKY BLUE

DONNA BLOUSE - STRIPE DESIGN 5

LADIES' SHORT SLEEVE: **DOB2S5**
LADIES' LONG SLEEVE: **DOB4S5**



FABRIC: Cotton rich yarn dye

ADULT SIZES:

28 - 30 - 32 - 34 - 36 - 38 - 40 - 42 - 44 - 46 - 48 - 50 - 52 - 54

FEATURES:

- Front and back darts
- Classy engraved DUCHESS buttons
- Comfortable cotton rich yarn dye fabric that is superior quality
- Crisp, classic stripe design





WASH & WEAR



STRETCH



EMMA BLOUSE

LADIES' SHORT SLEEVE: **EMM1**

LADIES' LONG SLEEVE: **EMM2**



FABRIC: Polyspandex

ADULT SIZES: 28 - 30 - 32 - 34 - 36 - 38 - 40 - 42 - 44 - 46

FEATURES:

- Flattering silhouette and mandarin collar
- Stretchy fabric offering wash & wear properties
- Long sleeve can be pulled up to 3/4 sleeves



MATTHEW SHIRT - CHECK DESIGN 1

MEN'S SHORT SLEEVE: **MAS2C1**
MEN'S LONG SLEEVE: **MAS4C1**

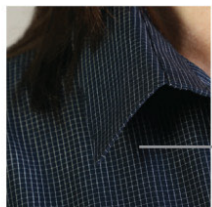


FABRIC: Cotton rich yarn dye

ADULT SIZES: S - M - L - XL - 2XL - 3XL - 4XL - 5XL

FEATURES:

- Left breast pocket
- Classy engraved VANGARD buttons
- Comfortable cotton rich yarn dye fabric that is superior quality



Classic graph check in navy



NAVY

VANGARD[®]

ROSELINA BLOUSE - CHECK DESIGN 1

LADIES' SHORT SLEEVE: **ROB2C1**
LADIES' LONG SLEEVE: **ROB4C1**



FABRIC: Cotton rich yarn dye

ADULT SIZES: 28 - 30 - 32 - 34 - 36 - 38 - 40 - 42 - 44 - 46 - 48 - 50 - 52 - 54

FEATURES:

- Front and back darts
- Classy engraved DUCHESS buttons
- Comfortable cotton rich yarn dye fabric that is superior quality



CAMERON SHIRT - CHECK DESIGN 3

MEN'S SHORT SLEEVE: **CAS2C3**
MEN'S LONG SLEEVE: **CAS4C3**



FABRIC: Cotton rich yarn dye

ADULT SIZES: S - M - L - XL - 2XL - 3XL - 4XL - 5XL

FEATURES:

- Smart tattersall check design
- Button down collar
- Left breast pocket
- Classy engraved VANGARD buttons
- Comfortable cotton rich yarn dye fabric that is superior quality



SKY



CHARCOAL

DONNA BLOUSE - CHECK DESIGN 3

LADIES' 3/4 SLEEVE: **DOB3C3**



FABRIC: Cotton rich yarn dye

ADULT SIZES: 28 - 30 - 32 - 34 - 36 - 38 - 40 - 42 - 44 - 46 - 48 - 50 - 52 - 54

FEATURES:

- Front and back darts
- Classy engraved DUCHESS buttons
- Smart tattersall check design
- Comfortable cotton rich yarn dye fabric that is superior quality



SKY



CHARCOAL



TRACTION PITCREW SHIRT

MEN'S PRODUCT CODE: **MWP1**

LADIES' PRODUCT CODE: **LWP1**



FABRIC: Polycotton with softwash treatment

ADULT SIZES: S - M - L - XL - 2XL - 3XL - 4XL - 5XL

FEATURES:

- Reinforced top stitching
- Styled chest piping detail
- Engraved matching buttons
- Easy-wear fabric is treated to create a soft feel
- Men's style has a single pocket



BLACK/ROYAL



WASH & WEAR



SAVANNAH BUSH SHIRT



MEN'S PRODUCT CODE: **MBS2**

LADIES' PRODUCT CODE: **LBS2**



FABRIC: 100% Cotton

SIZES: S - M - L - XL - 2XL - 3XL - 4XL - 5XL

FEATURES:

- 100% Durable cotton - all terrain fabric
- Double pleated pockets with buttons
- Reinforced double stitching

